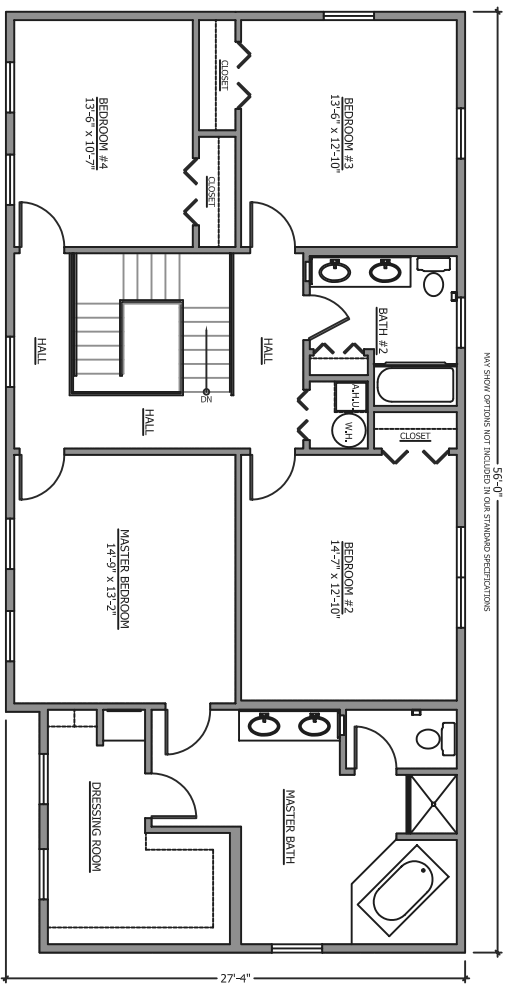
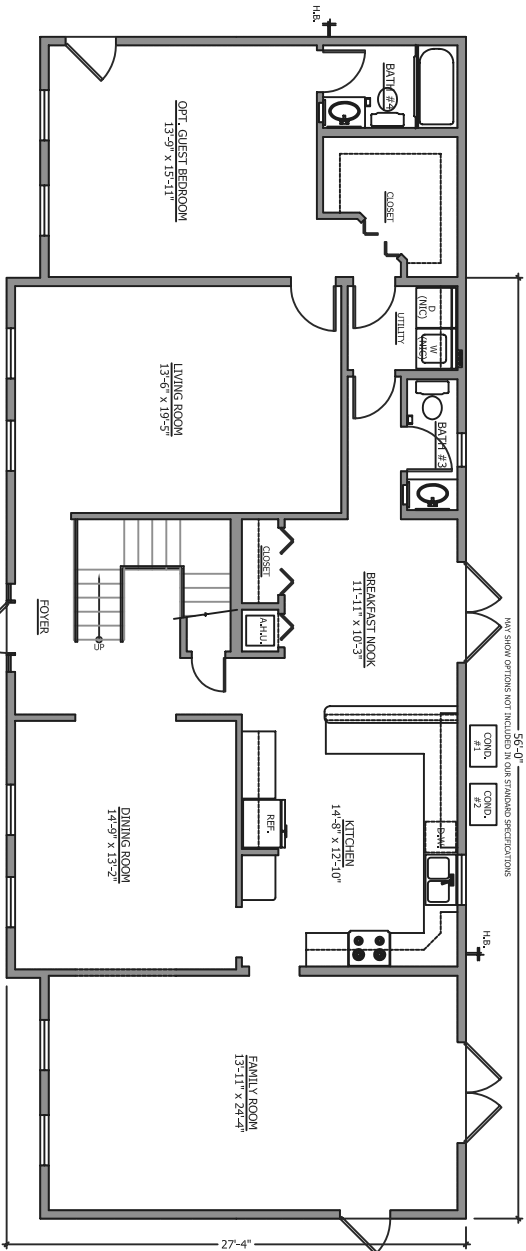


SECOND FLOOR



FIRST FLOOR

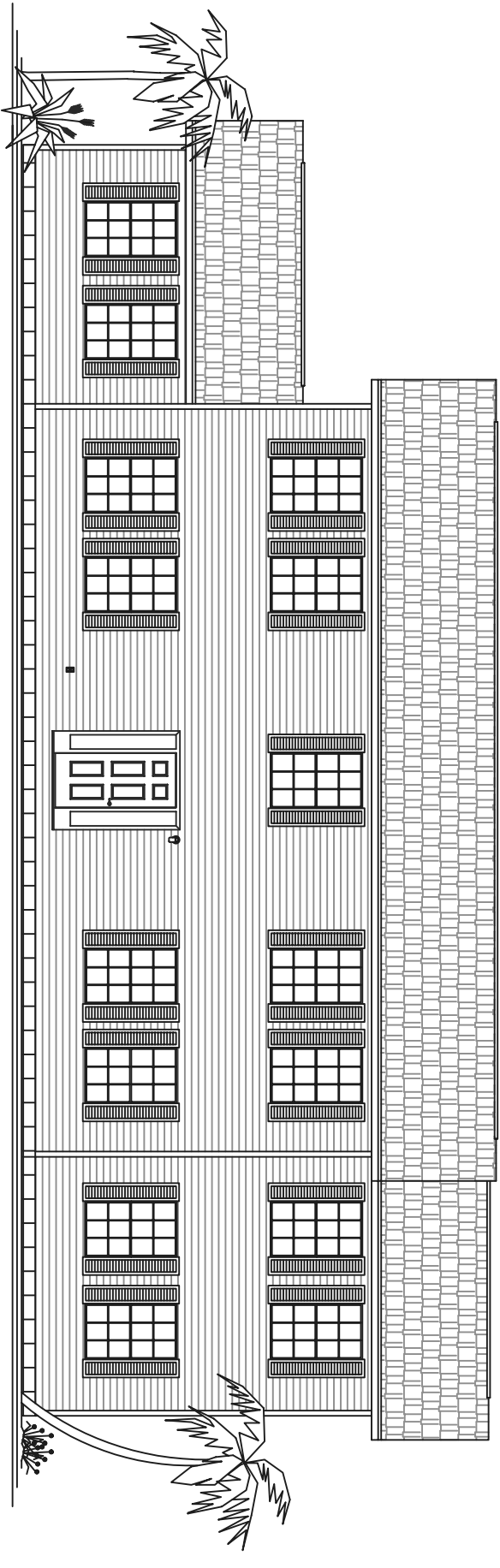


SOUTHERN STRUCTURES INC.
 334 CYPRESS ROAD
 OCALA, FLORIDA 34472
 WWW.SOUTHERNSTRUCTURESINC.COM

Phone (352) 680-1911
 Fax (352) 680-1903

© Southern Structures Incorporated
 These drawings are the sole property of Southern Structures Incorporated, and they may not be reproduced, copied, altered, or transferred in any manner, without the express written consent of Southern Structures Incorporated.
 Professional Drawings may show options not included as standard. These drawings are provided in confidence for the recipient's use only, and the recipient agrees to keep all information strictly confidential. All rights reserved.

"THE WASHINGTON"
 28' X 56' MODULAR HOME
 3,004 S.F.



FRONT ELEVATION

N.T.S.

MAY SHOW OPTIONS NOT INCLUDED IN OUR STANDARD SPECIFICATIONS

SOUTHERN STRUCTURES INC.
 334 CYPRESS ROAD
 OCALA, FLORIDA 34472
 www.southernstructuresinc.com

Phone (352) 680-1911
 Fax (352) 680-1903

© Southern Structures Incorporated
 These drawings are the sole property of Southern Structures Incorporated, and they may not be reproduced, copied, altered, or transferred in any manner, without the express written consent of Southern Structures Incorporated. Professional Drawings may show options not included as standard. These drawings are provided in confidence for the recipient's use only, and the recipient agrees to keep all information strictly confidential. All rights reserved.

"THE WASHINGTON"
 28' X 56' MODULAR HOME
 3,004 S.F.